



DOT9000 is our utility pc  
used to help manage range  
Servers and pc's





What is the DOT9000 ?





# DOT 9000

The DOT9000 pc is a laptop built to assist in the process of imaging servers and range pcs. The pc is loaded with a group of software that I use and have found to be helpful in creating and managing the pc's and servers used to create a range.

Over time I've created this due to the fact that I'm not that proficient at using line commands from a terminal window and I'm not that good at coding.

DOT9000 my tools of choice



DOT 9000

## The installed software

- + Fedora Media writer
- + K3B CD DVD creator
- + Balena Etcher
- + NoMachine
- + AnyDesk
- + SimplScreenRecorder
- + Brackets
- + VirtualBox
- + Gparted
- + Nmap



# DOT 9000

What makes up the dot9000 pc?





The operating system



## KDE Neon

I chose KDE Neon because it's easy to use if you're not an expert with commands, it's Ubuntu based and has a good group of tools readily available in its list of repositories such as Fedora Media Writer.



DOT 9000

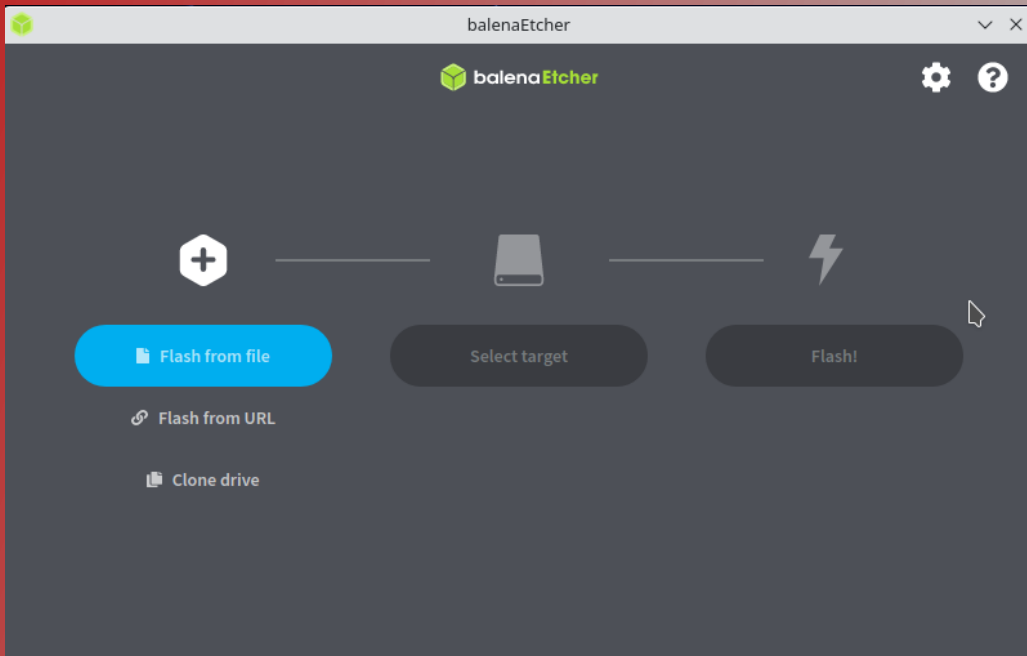
## Fedora Media Writer



Fedora Media writer for creating bootable thumb drives and resetting to factory defaults



## Balena Etcher

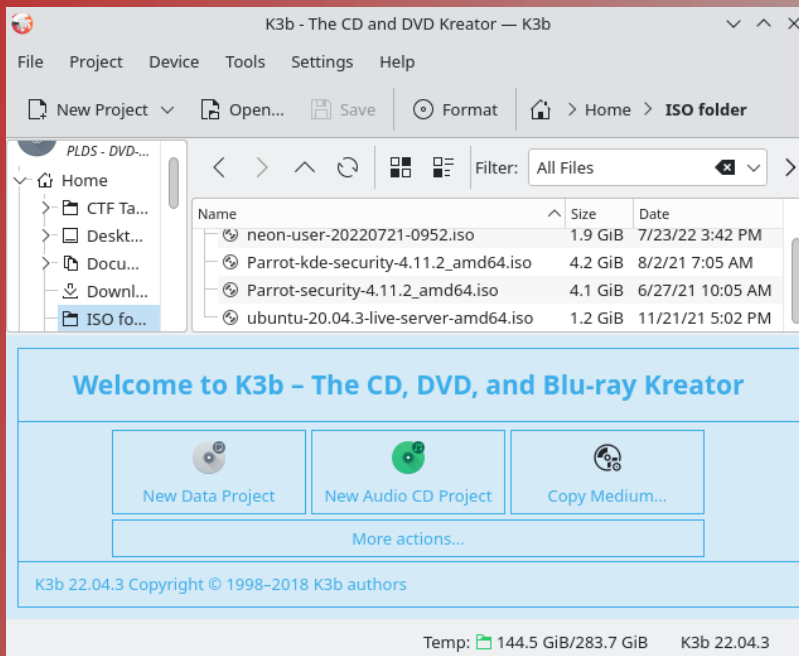


Balena Etcher, also for creating bootable thumb drives.





## K3B DVD Kreator

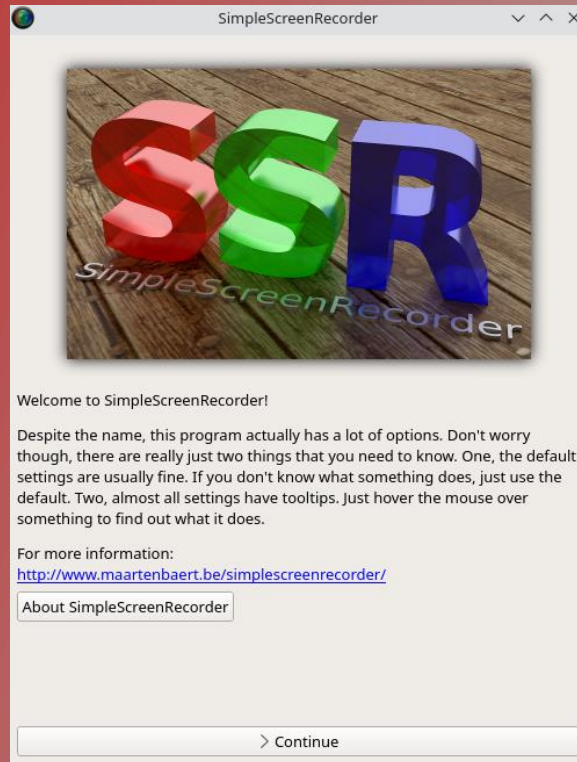


K3B CD and DVD Kreator is an easy to use excellent tool for creating bootable operating system images.



DOT 9000

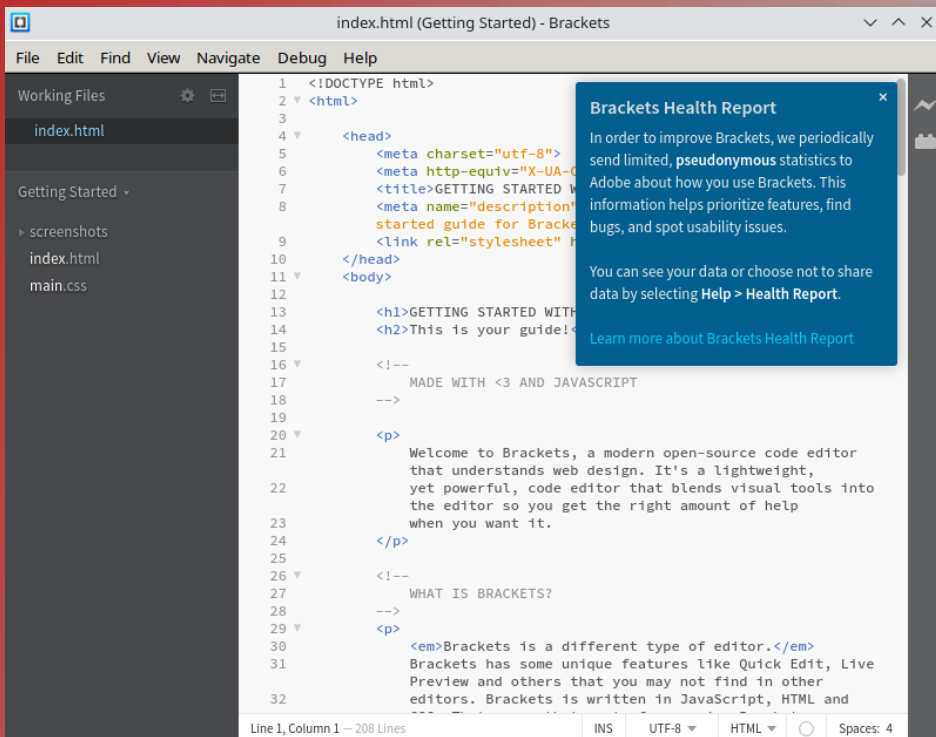
## SimpleScreenRecorder



Simple Screen Recorder. I use this to record the short videos I've created for YouTube.



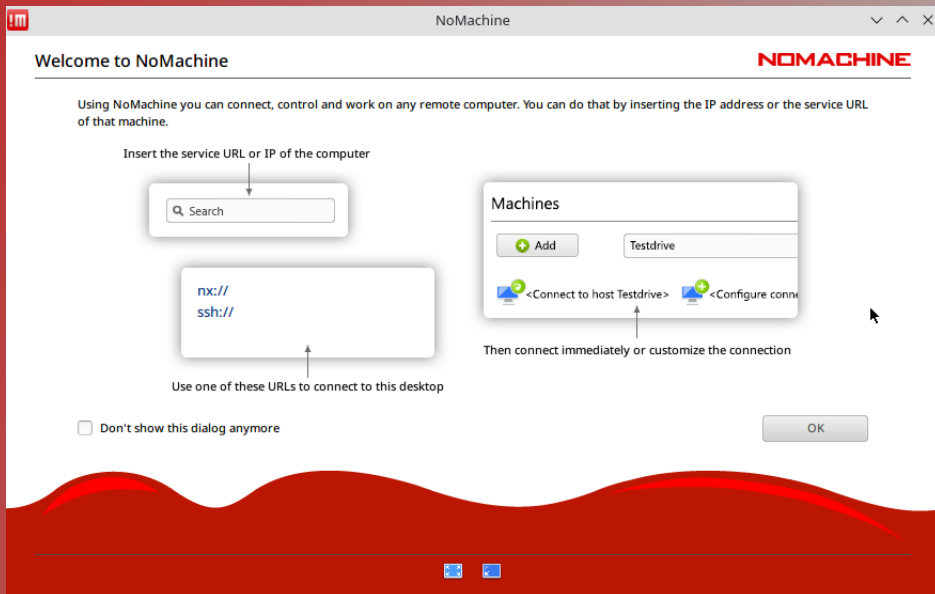
# Brackets



Brackets is a program I use to edit HTML programs that create the local website.



## NoMachine

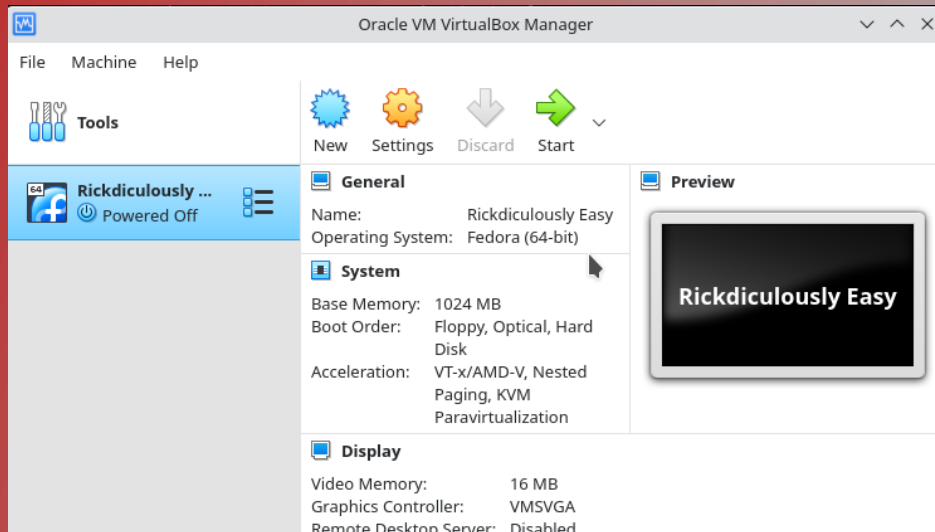


NoMachine is a simple to use remote desktop application. Works great for remotely controlling range servers



DOT 9000

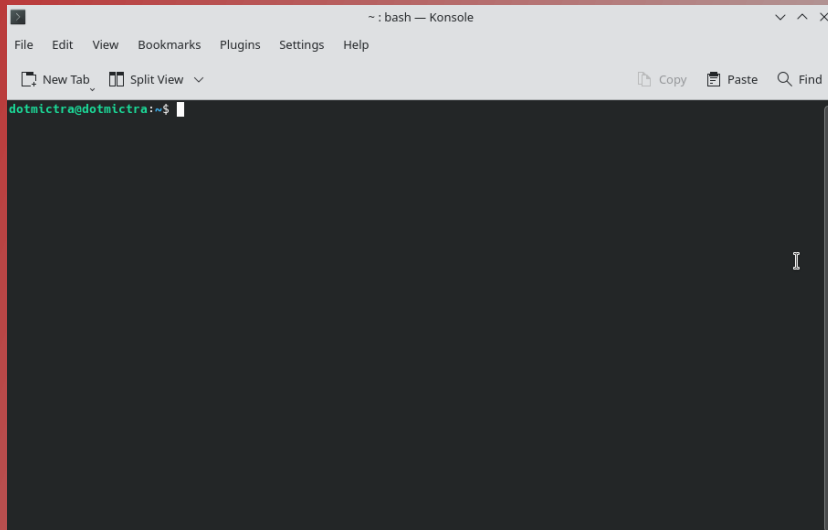
## VirtualBox



VirtualBox is nice to have on a Utility PC in order to test and modify VMs for the range.



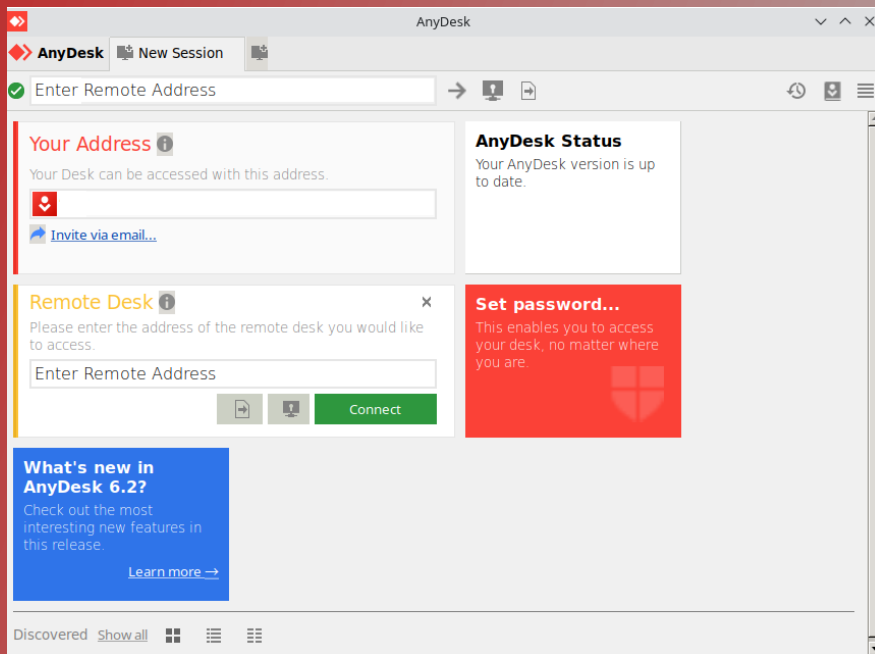
## Nmap



Nmap installed is a must in order to perform IP scans to determine open IP addresses and open ports.



## AnyDesk



AnyDesk is another remote desktop application. This works nice for assisting other users that are located outside of the range.



## DOT9000

The DOT9000 project is an example of what can be done with a little time and a recycled laptop. This project is an easy way for an individual to get started in understanding what it takes to create and manage a range. Even if you don't want to create a range, there are some useful tools in here for performing other IT related functions which might not be related directly to Cyber Security, but still helpful. Yes there are other tools out there, but these are the one I've chosen to work with.